

City of Portland  
Health & Human Services Department  
Social Services Division

PORTLAND HOMELESS SHELTERS

Total Number of Individuals Residing in Shelters per Night:

	October 2008	October 2009
ADOLESCENTS	9 Individuals	13 Individuals
ADULTS	212 Individuals	230 Individuals
FAMILIES	87 Individuals Average 35 Families	73 Individuals Average 29 Families
Total	308 Individuals	316 Individuals

31 Days in the Month of October

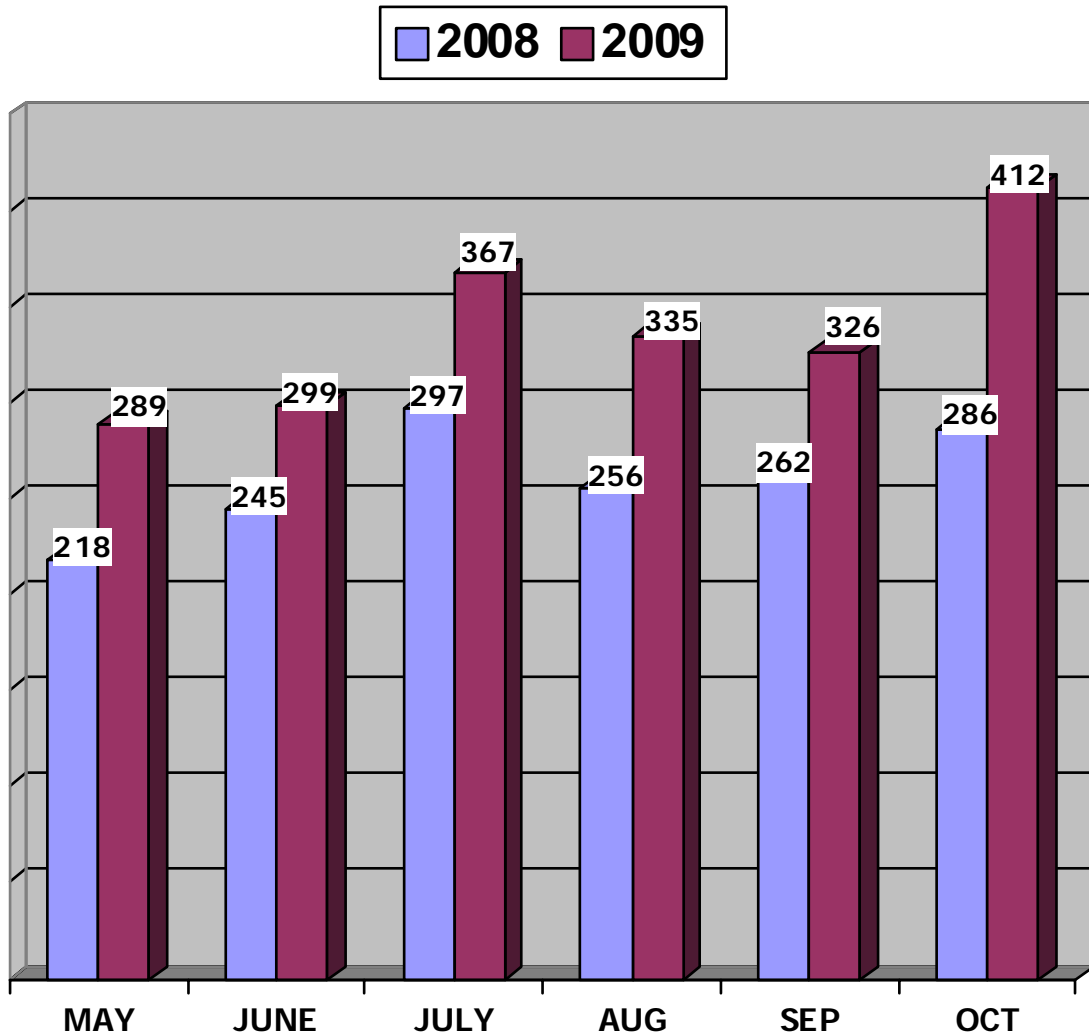
This information is also posted on the City of Portland's website each month.

To view this information, please go to

<http://www.portlandmaine.gov/hhs/ssesac.asp>

Prepared by:  
City of Portland  
Health & Human Services Department  
Social Services Division

OCTOBER 2009  
 ADOLESCENT BEDS USED  
 PREBLE STREET LIGHT HOUSE SHELTER



	May	June	July	August	Sept.	Oct.
2008	218	245	297	256	262	286
2009	289	299	367	335	326	412
Percent	25%	18%	19%	24%	24%	44%

PREBLE STREET  
 Lighthouse Shelter      16 Beds

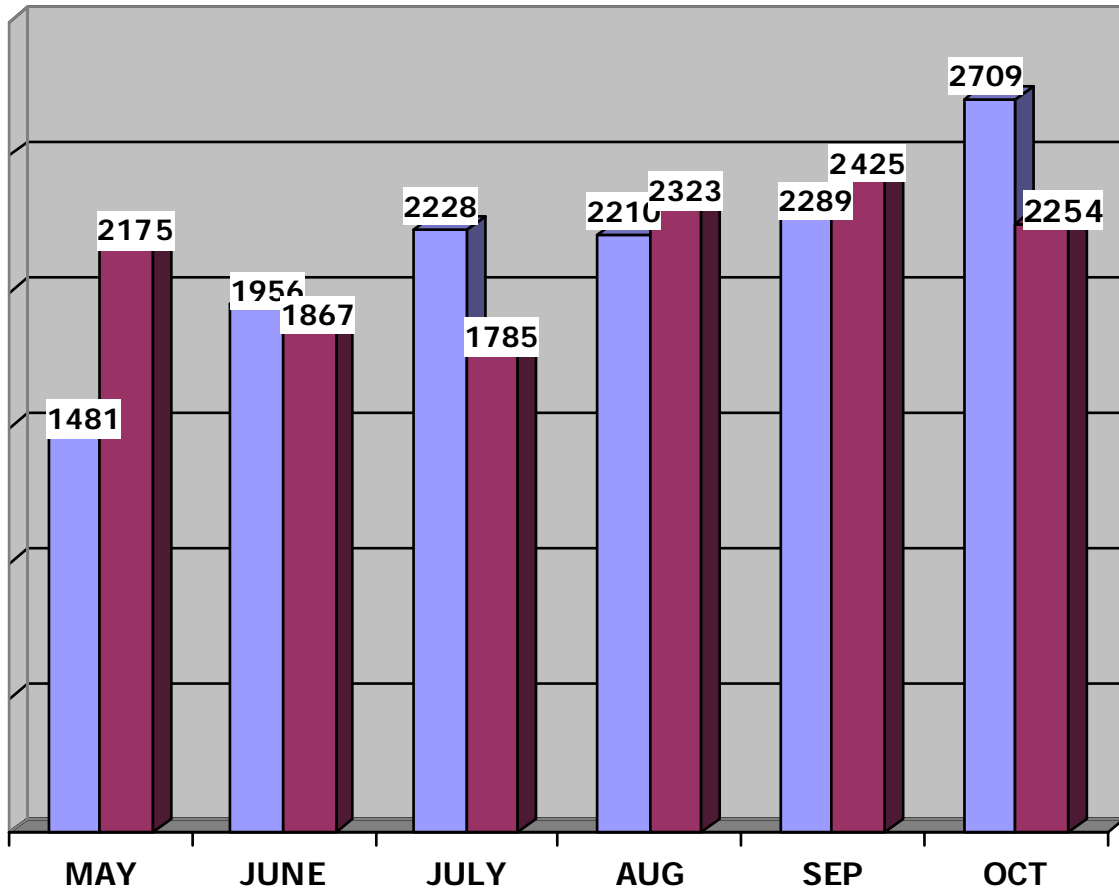
**\* EXPERIENCING HOMELESSNESS FOR THE 1<sup>ST</sup> TIME      10**  
 (\*BASED ON SELF-REPORTING)

OCTOBER 2009  
 ADOLESCENT SHELTER STATISTICS  
 PREBLE STREET LIGHT HOUSE SHELTER

Day of Month	Preble Street	Beds Available
	16	16
1	14	2
2	7	9
3	12	4
4	12	4
5	12	4
6	10	6
7	13	3
8	12	4
9	13	3
10	13	3
11	13	3
12	16	0
13	15	1
14	15	1
15	14	2
16	15	1
17	13	3
18	15	1
19	15	1
20	15	1
21	15	1
22	16	0
23	13	3
24	12	4
25	13	3
26	14	2
27	15	1
28	15	1
29	12	4
30	11	5
31	12	4
Totals	412	84
Ave/Night	13	3

OCTOBER 2009  
FAMILY BEDS USED

2008 2009



	May	June	July	August	Sept.	Oct.
2008	1481	1956	2228	2210	2289	2709
2009	2175	1867	1785	2323	2425	2254
Percent	32%	-5%	-20%	5%	6%	-17%

HEALTH & HUMAN SERVICES DEPARTMENT  
SOCIAL SERVICES DIVISION

Family Shelter 77 Beds

FAMILY CRISIS SHELTER 14 Beds

MAPS SHELTER SERVICES 10 Beds

EMERGENCY SHELTER 4 Beds  
General Assistance

OCTOBER 2009  
FAMILY SHELTER STATISTICS

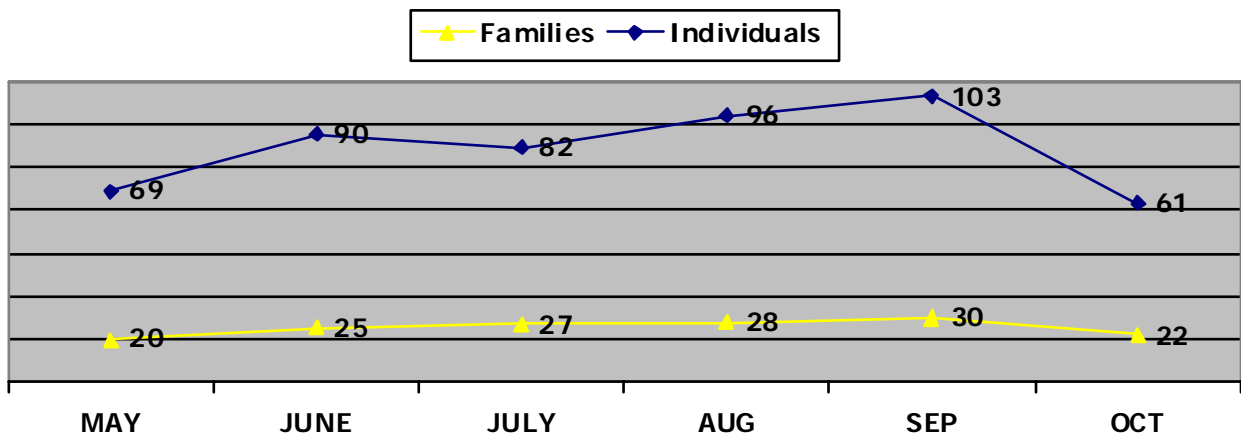
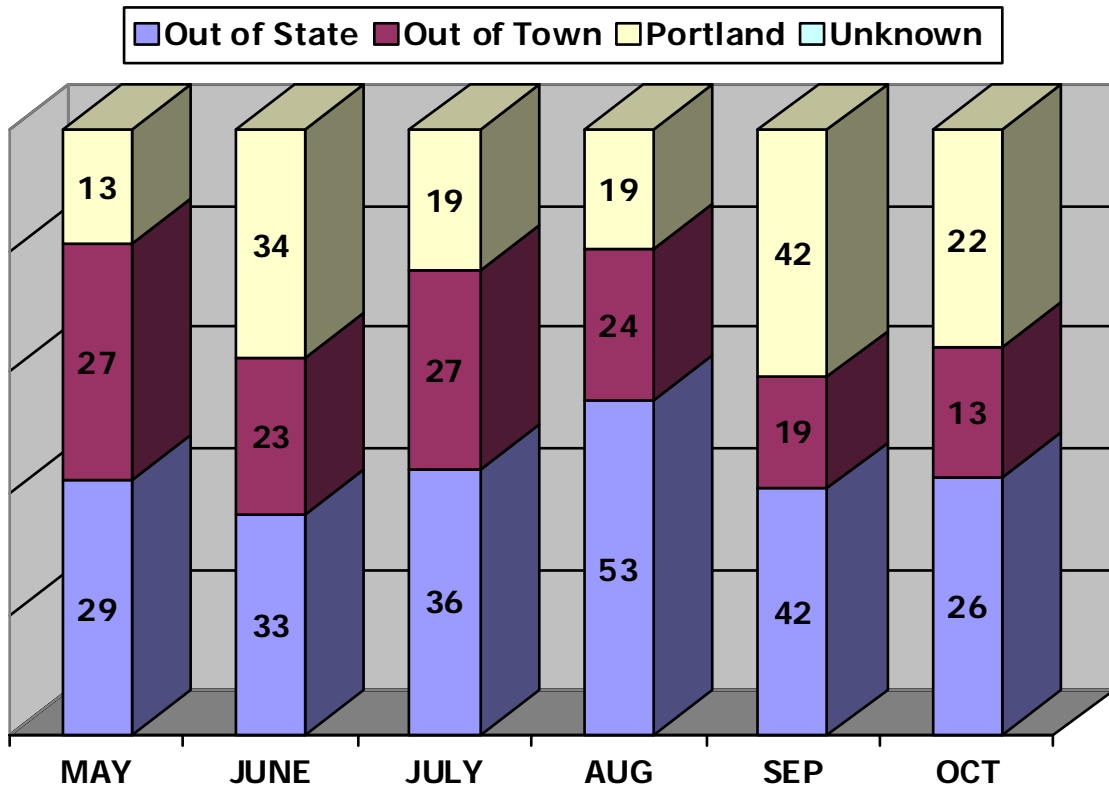
Day of Month	City* (# Families)	City Used	Family Crisis	MAPS Shelter	GA Hotels	Beds Used Per Night	Beds Available
	17	77	14	10			101
1	17	65	8	13	0	86	15
2	17	67	8	13	0	88	13
3	18	70	8	13	0	91	10
4	18	71	8	13	0	92	9
5	20	74	9	13	0	96	5
6	20	72	9	13	0	94	7
7	18	68	9	13	0	90	11
8	17	65	9	13	0	87	14
9	17	64	9	13	0	86	15
10	15	57	9	13	0	79	22
11	15	57	9	12	0	78	23
12	15	57	9	12	0	78	23
13	13	49	9	12	0	70	31
14	14	52	9	12	0	73	28
15	15	54	9	12	0	75	26
16	14	46	10	12	0	68	33
17	14	46	9	12	0	67	34
18	14	46	9	12	0	67	34
19	12	39	9	12	0	60	41
20	13	41	8	12	0	61	40
21	13	42	8	12	0	62	39
22	13	40	11	12	0	63	38
23	13	40	11	12	0	63	38
24	13	40	11	12	0	63	38
25	13	40	11	12	0	63	38
26	14	43	11	12	0	66	35
27	15	46	11	10	0	67	34
28	12	36	11	8	0	55	46
29	13	39	11	8	0	58	43
30	13	39	11	8	0	58	43
31	11	31	11	8	0	50	51
Totals	459	1596	294	364	0	2254	877
Ave/Night	15	51	9	12	0	73	28

CITY OF PORTLAND  
 Health & Human Services Department  
 Social Services Division

Family Shelter

OCTOBER 2009  
 Intake Statistics

Total Number of Individuals



Intake statistic or new arrival is defined as an individual that has not stayed at the Shelter for a period of three (3) months/90-days or longer.

CITY OF PORTLAND  
 Health & Human Services Department  
 Social Services Division  
**Family Shelter**  
 INDIVIDUALS

OCTOBER 2009

MAINE TOWNS

	Families / Individuals
Buxton	1 / 2
Ellsworth	1 / 3
Falmouth	1 / 4
South Portland	1 / 2
Westbrook	1 / 2

OUT-OF-STATE

	Families / Individuals
Arkansas	1 / 3
California	1 / 4
Djibouti	1 / 2
Florida	1 / 2
Kentucky	1 / 3
Massachusetts	1 / 3
Nevada	1 / 5
Tennessee	1 / 4

Maine Towns **5** Families for a total of **13** individuals

Out-of-State **8** Families for a total of **26** individuals

Portland **9** families for a total of **22** individuals

***TOTAL INTAKES: 22***  
*families for a total of 61 individuals*

**TOTAL NUMBER OF CLIENTS PLACED IN HOUSING**  
**TOTAL NUMBER OF CLIENTS THAT RETURNED**

**22 Families / 86 Individuals**  
**0**

**\*EXPERIENCING HOMELESSNESS FOR THE 1<sup>ST</sup> TIME**  
 (\*BASED ON SELF-REPORTING)

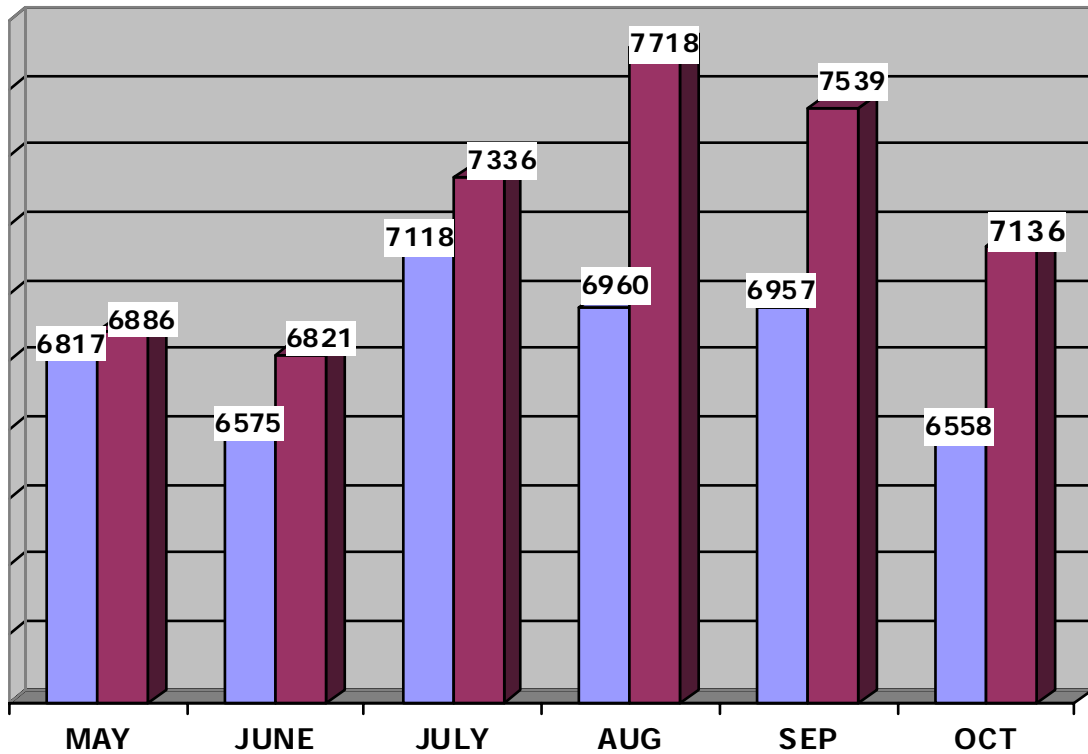
**9 Families / 27 Individuals**

\*Refugees experiencing homelessness for the 1<sup>st</sup> time

**2 Families / 9 Individuals**

OCTOBER 2009  
ADULT SHELTER  
STATISTICS

2008 2009



	MAY	JUNE	JULY	AUG	SEP	OCT
	May	June	July	August	Sept.	Oct.
2008	6817	6575	7118	6960	6957	6558
2009	6886	6821	7336	7718	7539	7136
Percent	1%	4%	3%	11%	8%	9%

MILESTONE FOUNDATION  
Substance Abuse Shelter 41 Beds

HEALTH & HUMAN SERVICES DEPARTMENT  
SOCIAL SERVICES DIVISION  
Oxford Street Shelter for Men 129 Beds

PREBLE STREET  
Women's Shelter 45 Beds

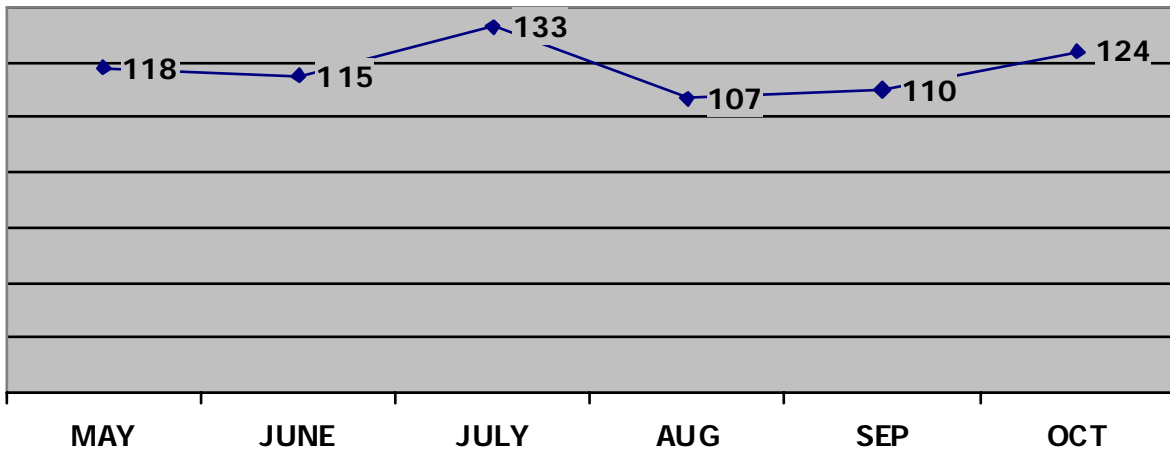
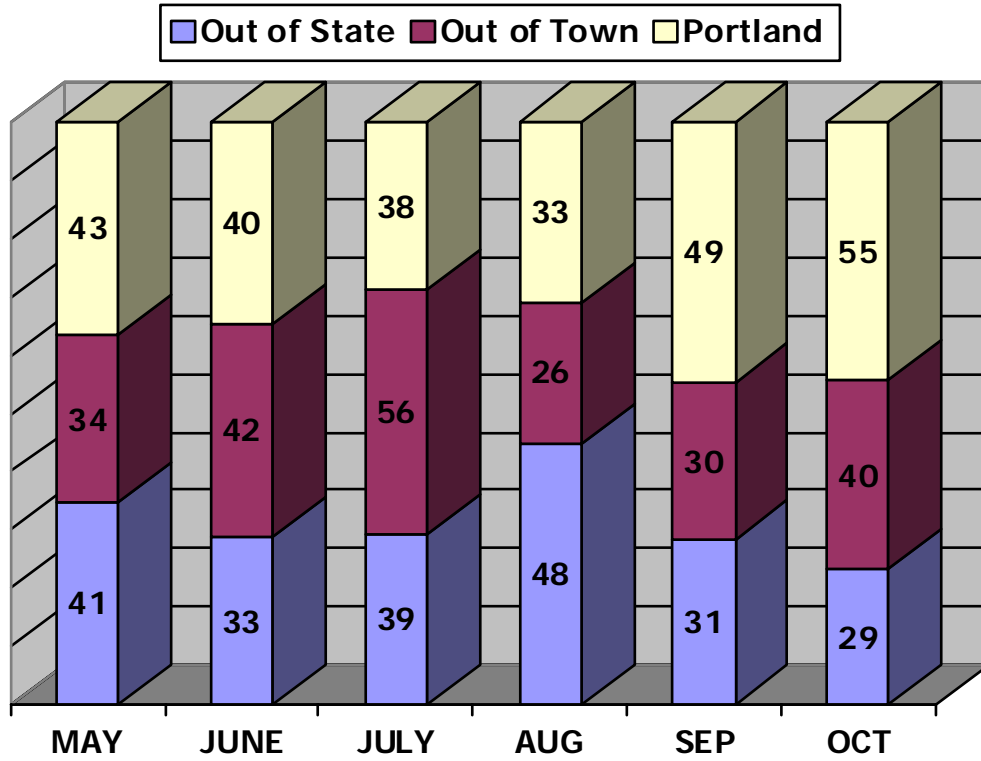
OCTOBER 2009  
ADULT SHELTER STATISTICS

Day of Month	Milestone	Oxford St	PS Women's Shelter	Beds Used per Night
	41	129	45	
1	40	145	51	236
2	39	134	45	218
3	39	113	47	199
4	38	131	51	220
5	42	131	53	226
6	40	139	46	225
7	42	141	50	233
8	45	135	51	231
9	44	136	52	232
10	44	131	51	226
11	39	132	48	219
12	43	142	55	240
13	42	144	51	237
14	44	137	52	233
15	50	144	54	248
16	46	137	60	243
17	43	131	61	235
18	40	140	60	240
19	43	143	63	249
20	42	146	51	239
21	44	151	57	252
22	47	149	51	247
23	37	133	50	220
24	40	129	46	215
25	41	129	53	223
26	41	133	54	228
27	45	138	53	236
28	44	137	52	233
29	45	141	59	245
30	38	123	44	205
31	44	117	42	203
TOTAL	1311	4212	1613	7136
Ave/Night	42	136	52	230

CITY OF PORTLAND  
 Health & Human Services Department  
 Social Services Division

Oxford Street Shelter

OCTOBER 2009  
 Intake Statistics



Intake statistic or new arrival is defined as an individual that has not stayed at the Shelter for a period of three (3) months/90-days or longer.

CITY OF PORTLAND  
 Health & Human Services Department  
 Social Services Division  
**Oxford Street Shelter for Men**

OCTOBER 2009

MAINE TOWN		OUT-OF-STATE			
Augusta	3	Alabama	1		
Bangor	4	Arkansas	1		
Biddeford	4	California	1		
Camden	1	Connecticut	1		
Casco	1	Florida	4		
Kezar Falls	1	Georgia	1		
Limington	1	Iowa	1		
Madawaska	1	Massachusetts	3		
Minot	1	Minnesota	1		
Monhegan	1	New York	5		
Naples	1	North Carolina	1		
Old Orchard Beach	1	Ohio	1		
Presque Isle	2	Texas	2		
Raymond	1	Vermont	2		
Sanford	3	Washington	1		
South Portland	5	Washington DC	2		
Standish	1	West Virginia	1		
Stueben	1				
Warren	1				
Waterville	1				
Westbrook	2				
Windham	2				
Yarmouth	1				
Maine Towns	40	Out-of-State	29	Portland	55
				TOTAL INTAKES	124

**TOTAL NUMBER OF MEN SERVED (Unduplicated Clients) 390**

**TOTAL NUMBER OF CLIENTS PLACED IN HOUSING 48**

**TOTAL NUMBER OF CLIENTS THAT RETURNED 0**

**TOTAL NUMBER OF CLIENTS PLACED AT THE YMCA 5**

**\*INTAKES EXPERIENCING HOMELESSNESS FOR THE 1<sup>ST</sup> TIME 62**

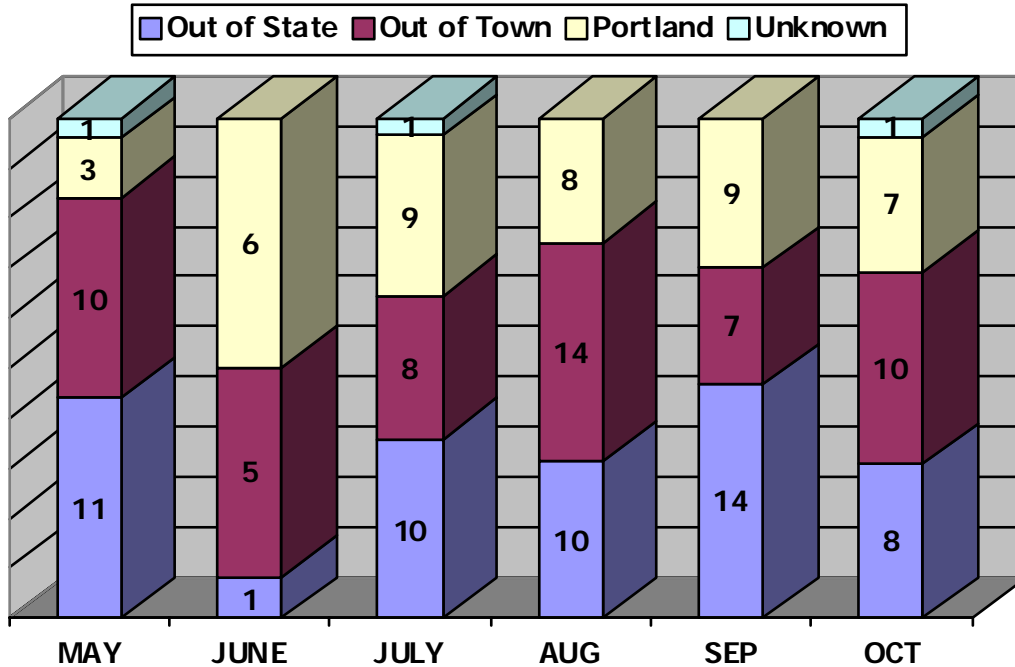
(\*BASED ON SELF-REPORTING)

# PREBLE STREET

## Preble Street Women's Shelter

OCTOBER 2009

Intake Statistics



### MAINE TOWNS

Bangor	1
Brunswick	1
Frankport	1
Gorham	1
Limington	1
Old Orchard Beach	1
Saco	1
South Portland	2
Thompson	1

### OUT-OF-STATE

California	3
Massachusetts	3
Ohio	1
Wisconsin	1

Maine Towns	10	Out-of-State	8	Portland	7
				Unknown	1

TOTAL INTAKES: 26

**TOTAL NUMBER OF WOMEN SERVED (Unduplicated Clients) 102**

**TOTAL NUMBER OF WOMEN PLACED IN HOUSING 11**

**TOTAL NUMBER OF WOMEN THAT RETURNED 1**

**\*INTAKES EXPERIENCING HOMELESSNESS FOR THE 1<sup>ST</sup> TIME 10**

(\*BASED ON SELF-REPORTING)