

City of Portland  
Health & Human Services Department  
Social Services Division

PORTLAND HOMELESS SHELTERS

Total Number of Individuals Residing in Shelters per Night:

	August 2008	August 2009
ADOLESCENTS	8 Individuals	11 Individuals
ADULTS	225 Individuals	249 Individuals
FAMILIES	71 Individuals Average 28 Families	75 Individuals Average 30 Families
Total	296 Individuals	335 Individuals

31 Days in the Month of August

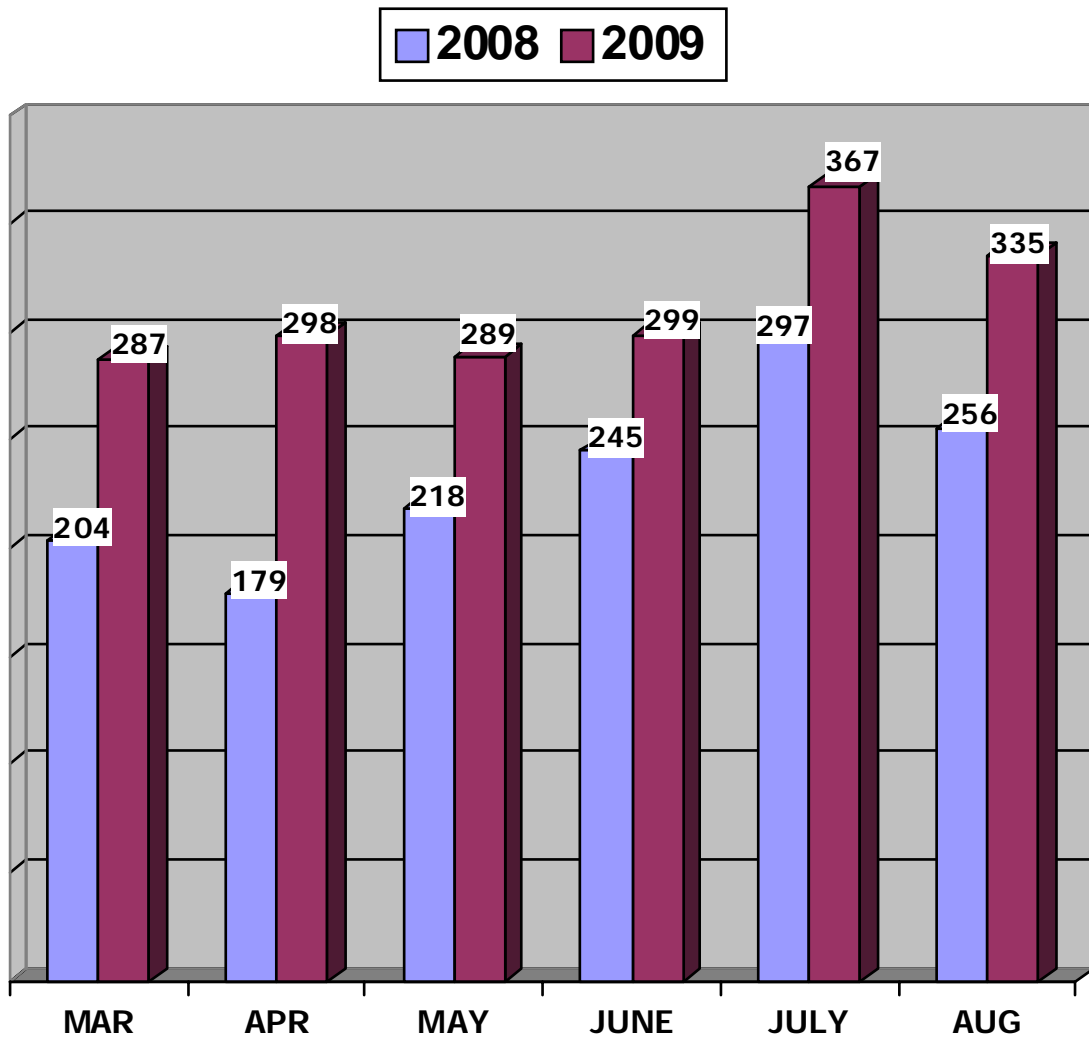
This information is also posted on the City of Portland's website each month.

To view this information, please go to

<http://www.portlandmaine.gov/hhs/ssesac.asp>

Prepared by:  
City of Portland  
Health & Human Services Department  
Social Services Division

AUGUST 2009  
 ADOLESCENT BEDS USED  
 PREBLE STREET LIGHT HOUSE SHELTER



	MAR	APR	MAY	JUNE	JULY	AUG
	March	April	May	June	July	August
2008	204	179	218	245	297	256
2009	287	298	289	299	367	335
Percent	29%	40%	25%	18%	19%	24%

PREBLE STREET  
 Lighthouse Shelter                      16 Beds

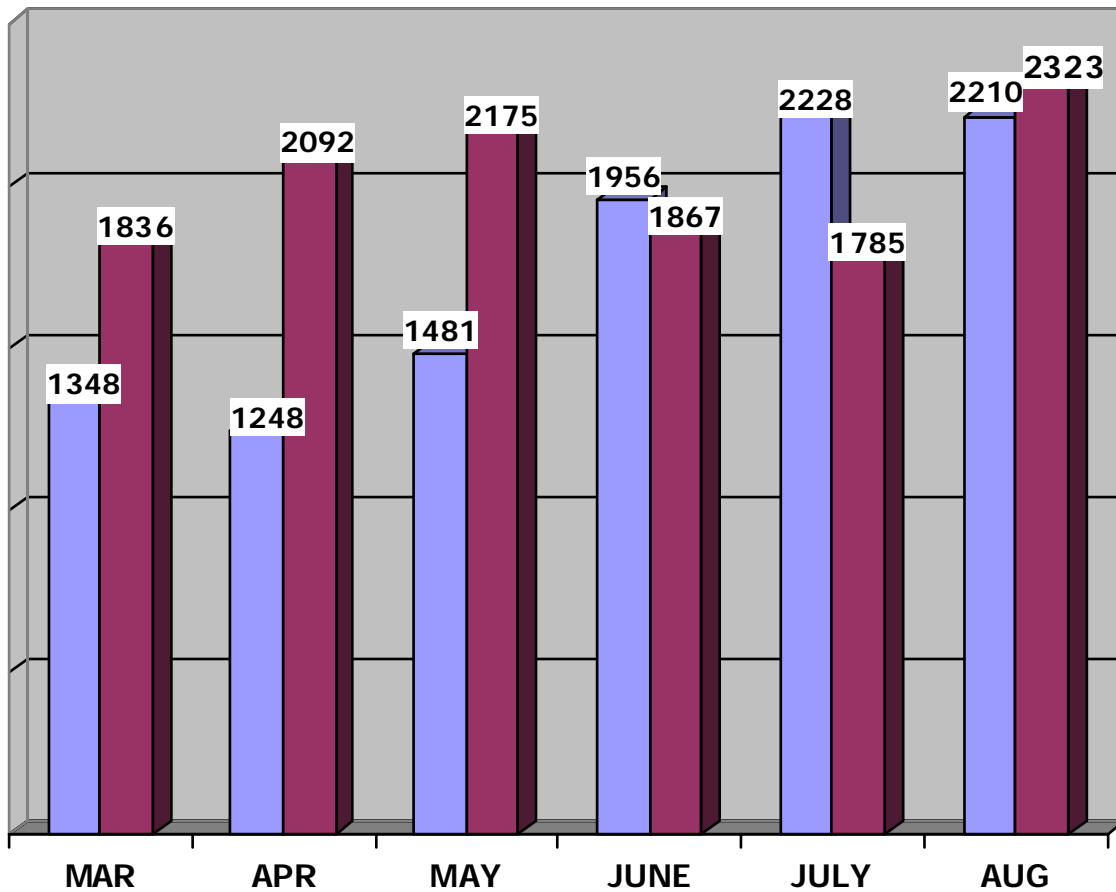
**\* EXPERIENCING HOMELESSNESS FOR THE 1<sup>ST</sup> TIME      11**  
 (\*BASED ON SELF-REPORTING)

AUGUST 2009  
 ADOLESCENT SHELTER STATISTICS  
 PREBLE STREET LIGHT HOUSE SHELTER

Day of Month	Preble Street	Beds Available
	16	16
1	8	8
2	12	4
3	12	4
4	11	5
5	12	4
6	13	3
7	14	2
8	12	4
9	13	3
10	8	8
11	9	7
12	8	8
13	12	4
14	11	5
15	11	5
16	9	7
17	8	8
18	11	5
19	12	4
20	9	7
21	11	5
22	10	6
23	12	4
24	13	3
25	12	4
26	10	6
27	10	6
28	10	6
29	10	6
30	12	4
31	10	6
Totals	335	161
Ave/Night	11	5

AUGUST 2009  
FAMILY BEDS USED

2008 2009



	March	April	May	June	July	August
2008	1348	1248	1481	1956	2228	2210
2009	1836	2092	2175	1867	1785	2323
Percent	27%	40%	32%	-5%	-20%	5%

HEALTH & HUMAN SERVICES DEPARTMENT  
SOCIAL SERVICES DIVISION

Family Shelter 77 Beds

FAMILY CRISIS SHELTER 14 Beds

MAPS SHELTER SERVICES 10 Beds

EMERGENCY SHELTER  
General Assistance

AUGUST 2009  
FAMILY SHELTER STATISTICS

Day of Month	City* (# Families)	City Used	Family Crisis	MAPS Shelter	GA Hotels	Beds Used Per Night	Beds Available
	17	77	14	10			101
1	16	54	9	9	0	72	29
2	16	54	9	9	0	72	29
3	11	36	9	9	0	54	47
4	11	35	9	9	0	53	48
5	12	37	9	9	0	55	46
6	13	43	9	8	0	60	41
7	17	58	9	8	0	75	26
8	18	61	9	8	0	78	23
9	17	58	9	8	0	75	26
10	21	67	9	6	0	82	19
11	19	61	9	6	0	76	25
12	20	63	9	6	0	78	23
13	20	63	9	6	0	78	23
14	21	61	9	8	0	78	23
15	21	61	9	8	0	78	23
16	21	61	9	8	0	78	23
17	20	60	9	8	0	77	24
18	20	61	9	8	0	78	23
19	21	66	9	8	0	83	18
20	19	57	9	8	0	74	27
21	20	60	9	10	0	79	22
22	20	60	9	7	0	76	25
23	21	62	9	7	0	78	23
24	20	57	9	7	0	73	28
25	18	51	11	7	0	69	32
26	18	52	11	7	0	70	31
27	19	59	11	7	0	77	24
28	20	66	11	7	0	84	17
29	20	66	11	7	0	84	17
30	20	66	12	7	0	85	16
31	21	75	12	7	0	94	7
Totals	571	1791	295	237	0	2323	808
Ave/Night	18	58	9	8	0	75	26

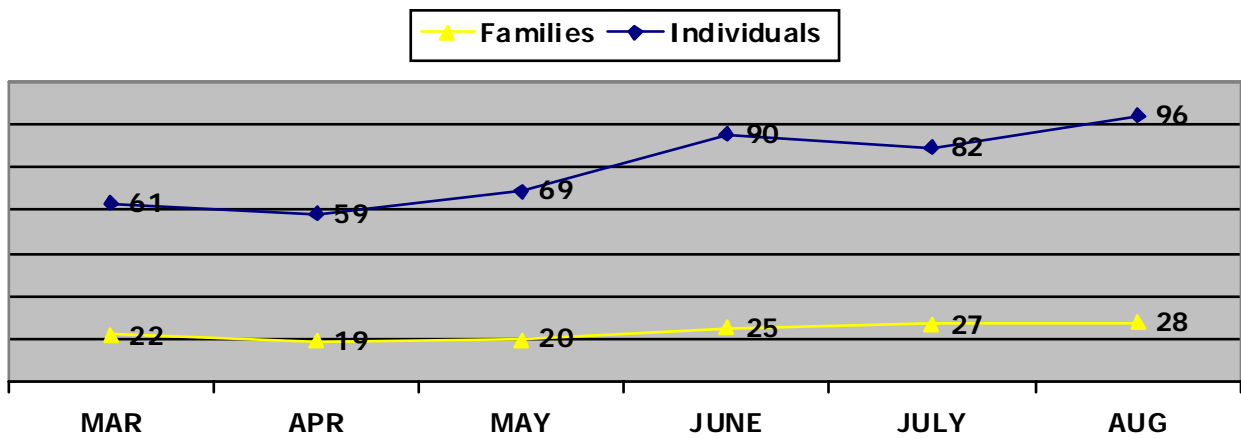
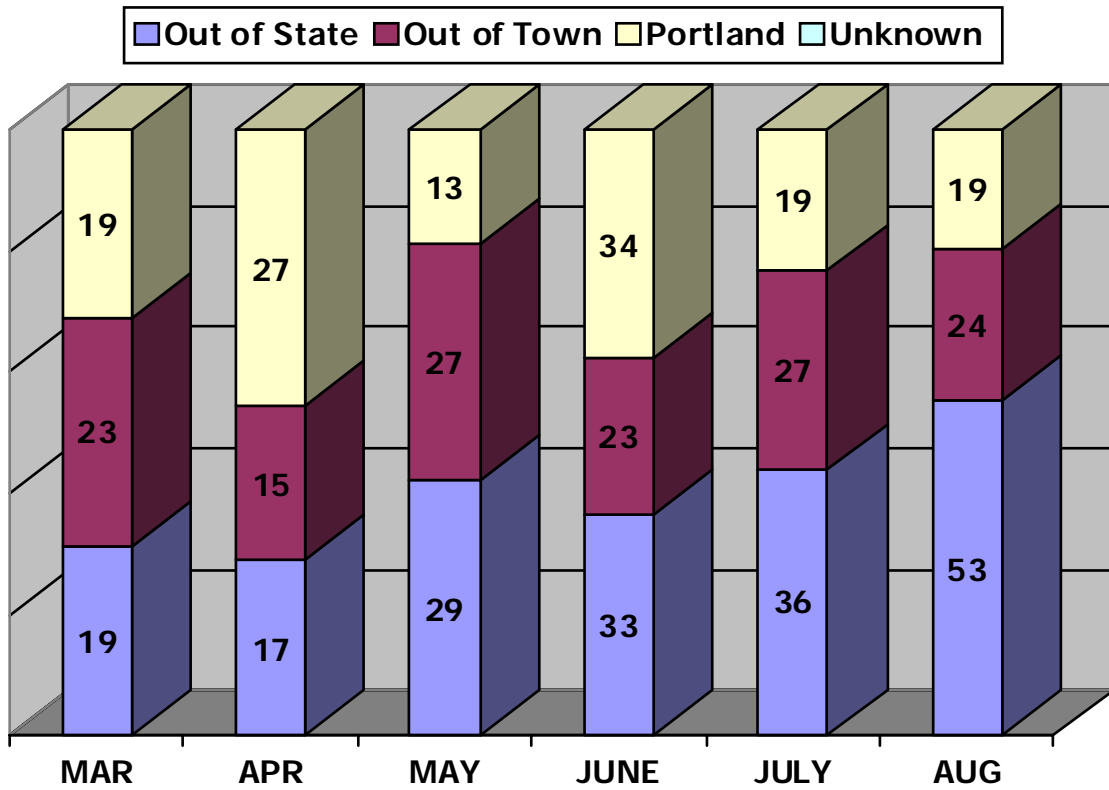
CITY OF PORTLAND  
 Health & Human Services Department  
 Social Services Division

Family Shelter

AUGUST 2009

Intake Statistics

Total Number of Individuals



Intake statistic or new arrival is defined as an individual that has not stayed at the Shelter for a period of three (3) months/90-days or longer.

CITY OF PORTLAND  
 Health & Human Services Department  
 Social Services Division  
**Family Shelter**  
 INDIVIDUALS

AUGUST 2009

MAINE TOWNS

	Families / Individuals
Dexter	1 / 4
Gray	1 / 5
Limington	1 / 6
South Portland	1 / 3
Springvale	1 / 3
Winthrop	1 / 3

OUT-OF-STATE

	Families / Individuals
Arizona	2 / 8
Burundi	1 / 4
Colorado	1 / 2
Connecticut	1 / 2
Florida	2 / 5
Indiana	1 / 7
Kentucky	1 / 4
Nebraska	1 / 2
Ohio	1 / 3
Pennsylvania	1 / 7
Rhode Island	1 / 3
Rwanda	1 / 6

Maine Towns **6** Families for a total of **24** individuals

Out-of-State **14** Families for a total of **53** individuals

Portland **8** families for a total of **19** individuals

***TOTAL INTAKES: 28***  
*families for a total of 96 individuals*

**TOTAL NUMBER OF CLIENTS PLACED IN HOUSING**  
**TOTAL NUMBER OF CLIENTS THAT RETURNED**

**21 Families / 68 Individuals**  
**0**

**\*EXPERIENCING HOMELESSNESS FOR THE 1<sup>ST</sup> TIME**  
**(\*BASED ON SELF-REPORTING)**

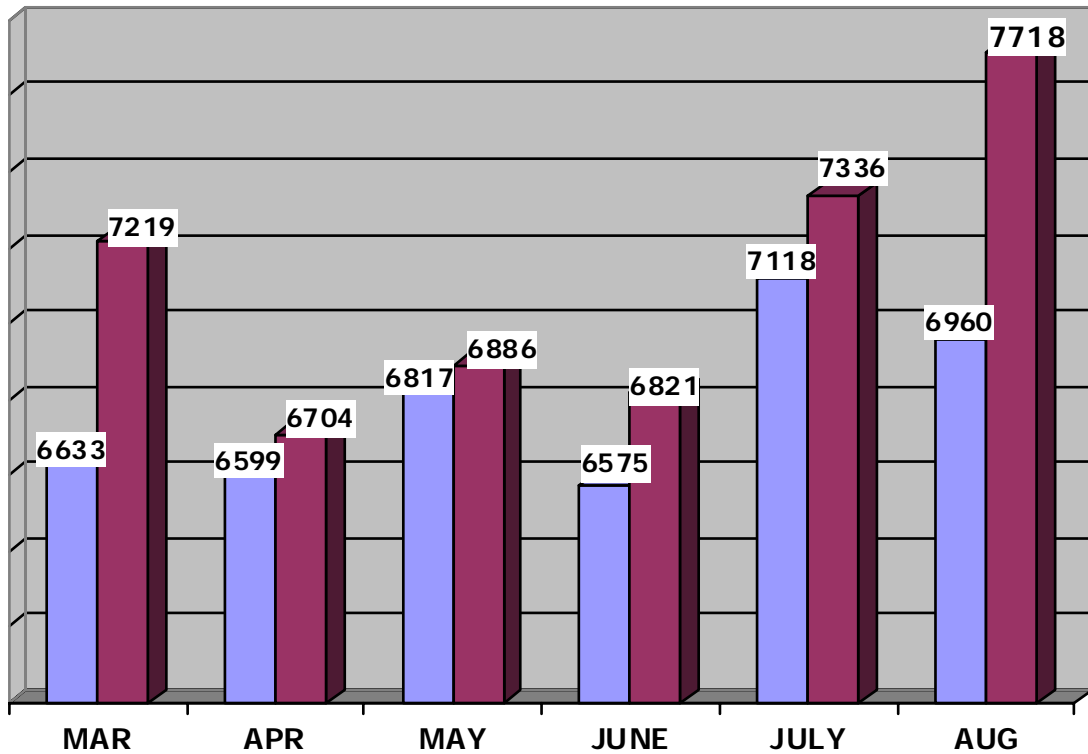
**13 Families / 50 Individuals**

\*Refugees experiencing homelessness for the 1<sup>st</sup> time

**4 Families / 14 Individuals**

AUGUST 2009  
ADULT SHELTER  
STATISTICS

2008 2009



	MAR	APR	MAY	JUNE	JULY	AUG
	March	April	May	June	July	August
2008	6633	6599	6817	6575	7118	6960
2009	7219	6704	6886	6821	7336	7718
Percent	8%	2%	1%	4%	3%	11%

MILESTONE FOUNDATION  
Substance Abuse Shelter            41 Beds

HEALTH & HUMAN SERVICES DEPARTMENT  
SOCIAL SERVICES DIVISION  
Oxford Street Shelter for Men    129 Beds

PREBLE STREET  
Women's Shelter                        45 Beds

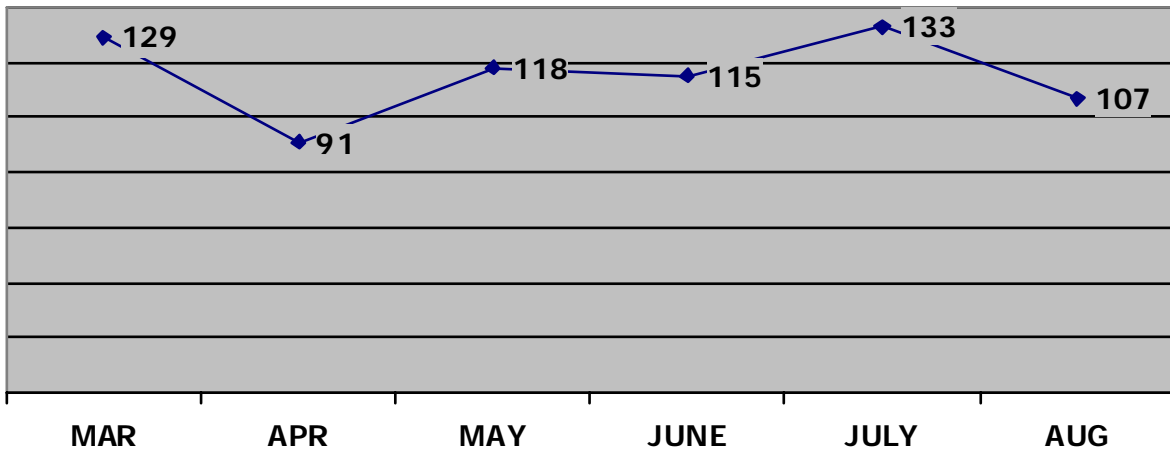
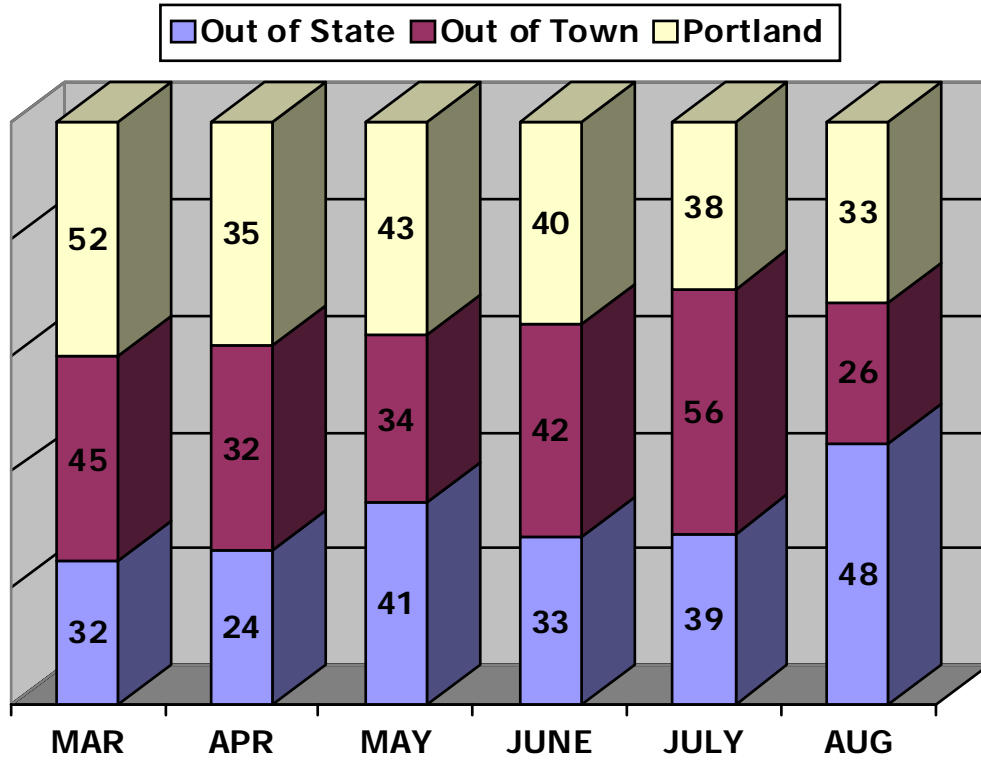
AUGUST 2009  
ADULT SHELTER STATISTICS

Day of Month	Milestone	Oxford St	PS Women's Shelter	Beds Used per Night
	41	129	45	
1	34	137	44	215
2	48	146	51	245
3	44	150	52	246
4	48	139	51	238
5	28	154	48	230
6	47	144	51	242
7	41	145	52	238
8	41	149	55	245
9	42	153	56	251
10	48	151	61	260
11	44	150	64	258
12	45	154	63	262
13	46	154	59	259
14	47	150	62	259
15	43	149	55	247
16	37	148	56	241
17	38	153	54	245
18	47	150	55	252
19	42	147	55	244
20	37	150	59	246
21	35	151	62	248
22	39	141	57	237
23	44	153	67	264
24	38	153	66	257
25	44	155	63	262
26	37	158	60	255
27	42	146	61	249
28	38	152	66	256
29	39	140	63	242
30	38	158	68	264
31	43	151	67	261
TOTAL	1284	4631	1803	7718
Ave/Night	41	149	58	249

CITY OF PORTLAND  
 Health & Human Services Department  
 Social Services Division

Oxford Street Shelter

AUGUST 2009  
 Intake Statistics



Intake statistic or new arrival is defined as an individual that has not stayed at the Shelter for a period of three (3) months/90-days or longer.

CITY OF PORTLAND  
 Health & Human Services Department  
 Social Services Division  
**Oxford Street Shelter for Men**

AUGUST 2009

MAINE TOWN		OUT-OF-STATE			
Alfred	2	Arizona	3		
Auburn	2	California	3		
Bridgton	1	Congo	1		
Camden	1	Florida	5		
Casco	1	Georgia	1		
Cumberland Center	1	Iowa	1		
Lewiston	2	Indiana	1		
Mexico	1	Kansas	1		
North Yarmouth	1	Massachusetts	5		
Old Orchard Beach	2	Minnesota	2		
Rangely	1	Missouri	1		
Saco	2	Nevada	1		
South Portland	1	New Hampshire	3		
Turner	1	New York	5		
West Standish	1	North Carolina	1		
Westbrook	5	Oklahoma	1		
Windham	1	Pennsylvania	2		
		Russia	1		
		Tennessee	2		
		Texas	3		
		Utah	1		
		Washington	3		
		Wisconsin	1		
Maine Towns	26	Out-of-State	48	Portland	33
				TOTAL INTAKES	107

**TOTAL NUMBER OF MEN SERVED (Unduplicated Clients) 381**

**TOTAL NUMBER OF CLIENTS PLACED IN HOUSING 48**

**TOTAL NUMBER OF CLIENTS THAT RETURNED 0**

**TOTAL NUMBER OF CLIENTS PLACED AT THE YMCA 5**

**\*INTAKES EXPERIENCING HOMELESSNESS FOR THE 1<sup>ST</sup> TIME 51**

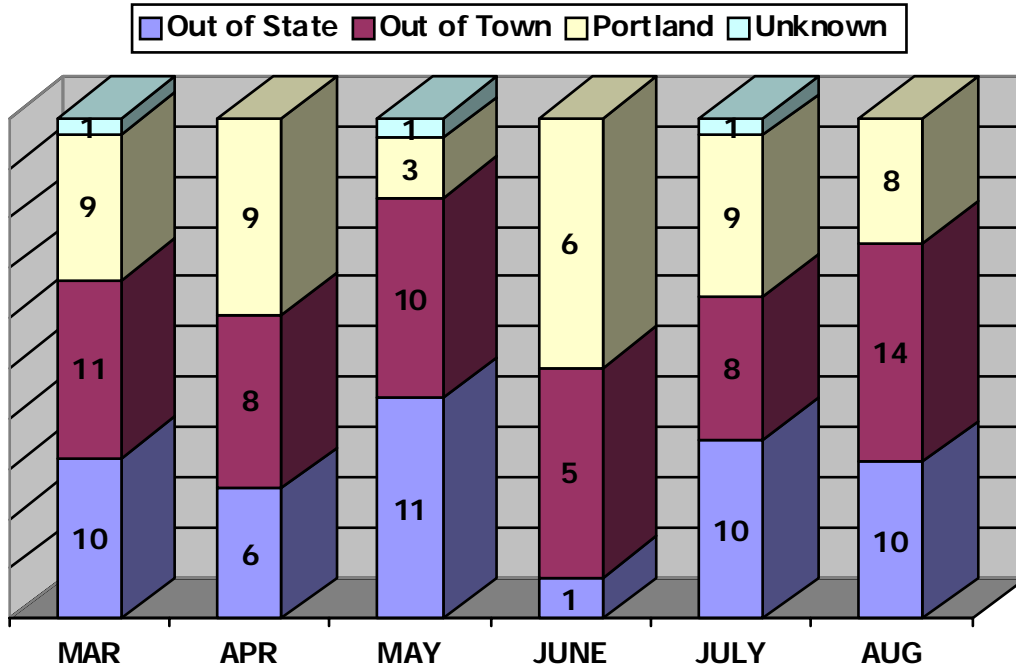
(\*BASED ON SELF-REPORTING)

# PREBLE STREET

## Preble Street Women's Shelter

AUGUST 2009

Intake Statistics



### MAINE TOWNS

Bangor	1
Biddeford	2
Mousam Valley	1
Presque Isle	1
Sanford	1
Scarborough	1
South Portland	1
Standish	1
Unknown ME town	1
Westbrook	4

### OUT-OF-STATE

Connecticut	1
Massachusetts	1
Nevada	2
New Hampshire	2
Pennsylvania	1
South Carolina	1
Washington	1
Wisconsin	1

Maine Towns 14

Out-of-State 10

Portland 8

TOTAL INTAKES: 32

**TOTAL NUMBER OF WOMEN SERVED (Unduplicated Clients) 122**

**TOTAL NUMBER OF WOMEN PLACED IN HOUSING 5**

**TOTAL NUMBER OF WOMEN THAT RETURNED 2**

**\* INTAKES EXPERIENCING HOMELESSNESS FOR THE 1<sup>ST</sup> TIME 15**  
 (\*BASED ON SELF-REPORTING)