

City of Portland  
Health & Human Services Department  
Social Services Division

PORTLAND HOMELESS SHELTERS

Total Number of Individuals Residing in Shelters per Night:

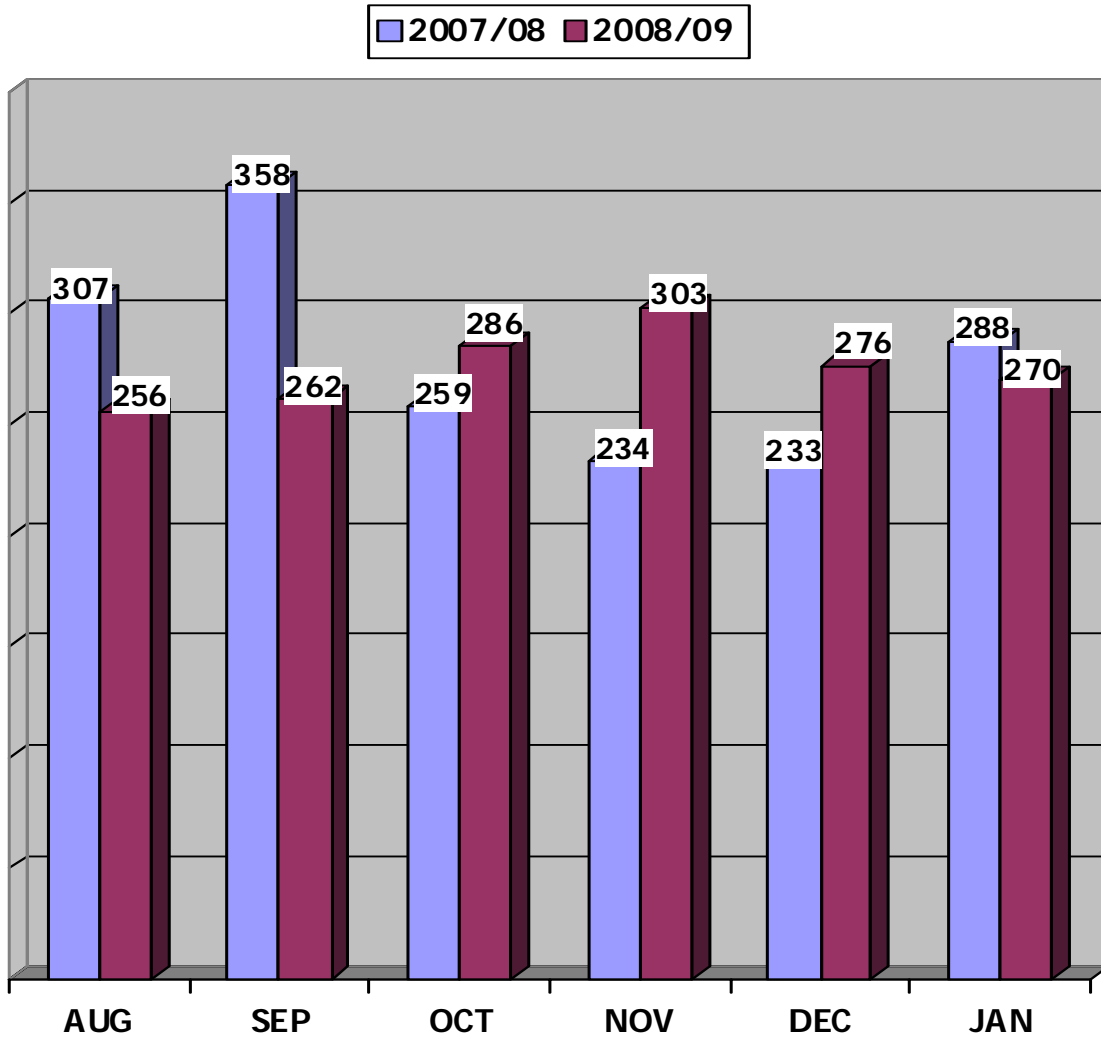
	January 2008	January 2009
ADOLESCENTS	9 Individuals	9 Individuals
ADULTS	210 Individuals	209 Individuals
FAMILIES	38 Individuals Average 15 Families	53 Individuals Average 10 Families
Total	257 Individuals	271 Individuals

31 Days in the Month of January

This information is also posted on the City of Portland's website each month. To view this information, please go to <http://www.portlandmaine.gov/hhs/hhsreports.asp>

Prepared by:  
City of Portland  
Health & Human Services Department  
Social Services Division

JANUARY 2009  
 ADOLESCENT BEDS USED  
 PREBLE STREET LIGHT HOUSE SHELTER



	Aug	Sep	Oct	Nov	Dec	Jan
2007/08	307	358	259	234	233	288
2008/09	256	262	286	303	276	270
Percent	-7%	-27%	9%	23%	16%	-6%

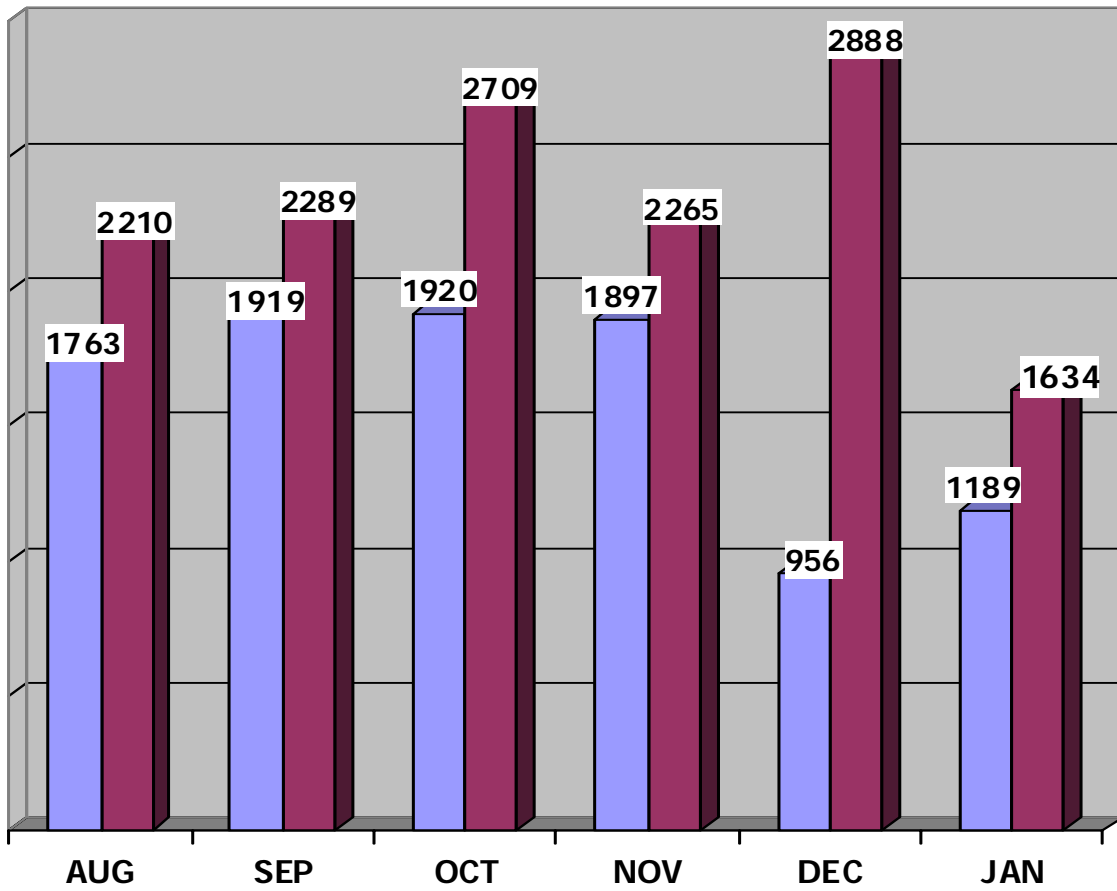
PREBLE STREET  
 Lighthouse Shelter      16 Beds

JANUARY 2009  
 ADOLESCENT SHELTER STATISTICS  
 PREBLE STREET LIGHT HOUSE SHELTER

	Day of Month	Preble Street	Beds Available
		16	16
	1	4	12
	2	8	8
	3	9	7
	4	8	8
	5	9	7
	6	12	4
	7	11	5
	8	8	8
	9	9	7
	10	7	9
	11	10	6
	12	10	6
	13	6	10
	14	12	4
	15	6	10
	16	8	8
	17	6	10
	18	5	11
	19	6	10
	20	7	9
	21	10	6
	22	13	3
	23	10	6
	24	12	4
	25	11	5
	26	11	5
	27	9	7
	28	10	6
	29	9	7
	30	5	11
	31	9	7
Totals	270	270	226
Ave/Night	9	9	7

JANUARY 2009  
FAMILY BEDS USED

2007/08 2008/09



	Aug	Sep	Oct	Nov	Dec	Jan
2007/08	1763	1919	1920	1897	956	1189
2008/09	2210	2289	2709	2265	2888	1634
Percent	20%	16%	29%	16%	67%	27%

HEALTH & HUMAN SERVICES DEPARTMENT  
SOCIAL SERVICES DIVISION

Family Shelter 77 Beds

FAMILY CRISIS SHELTER 14 Beds

MAPS SHELTER SERVICES 10 Beds

EMERGENCY SHELTER  
General Assistance

JANUARY 2009  
FAMILY SHELTER STATISTICS

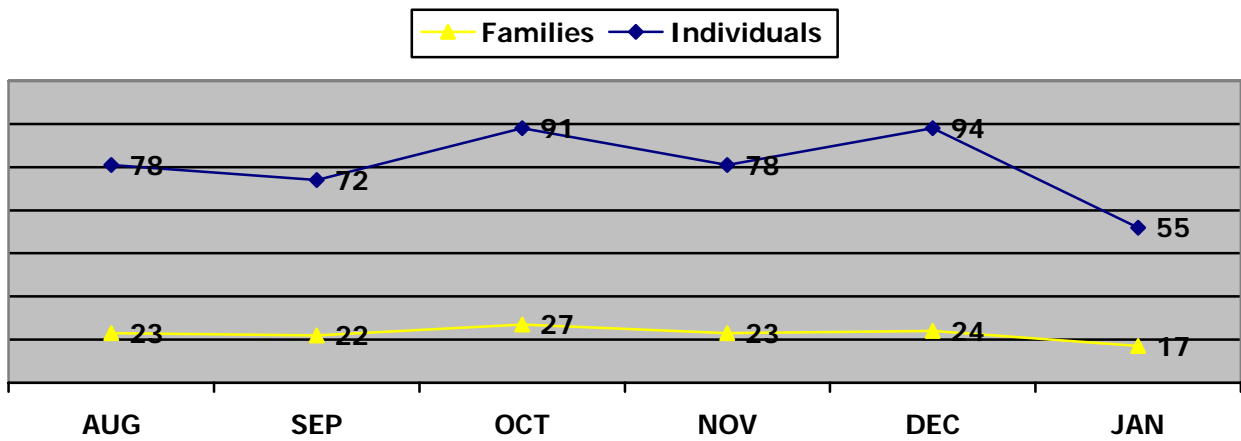
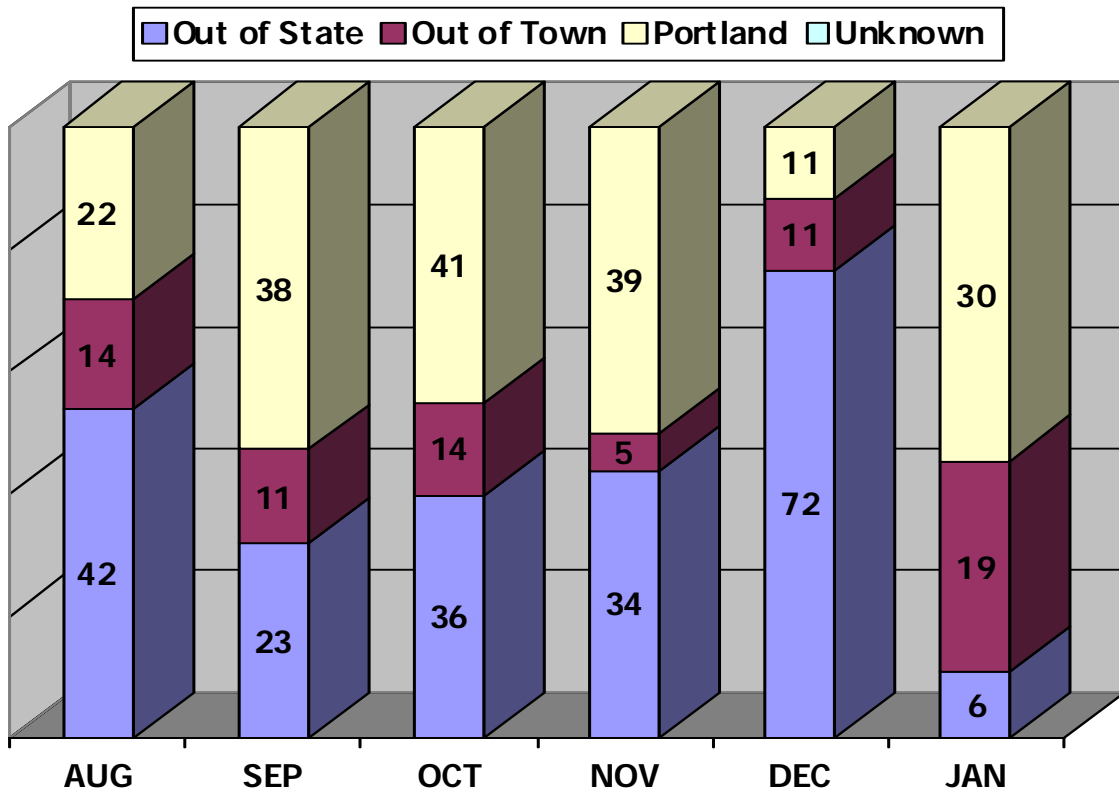
Day of Month	City* (# Families)	City Used	Family Crisis	MAPS Shelter	GA Hotels	Beds Used Per Night	Beds Available
	17	77	14	10			101
1	12	49	9	11	0	69	32
2	7	30	8	11	0	49	52
3	7	30	8	11	0	49	52
4	7	30	12	11	0	53	48
5	8	32	12	11	0	55	46
6	9	39	8	11	0	58	43
7	8	33	5	11	0	49	52
8	9	38	5	10	0	53	48
9	9	38	5	10	0	53	48
10	9	38	5	10	0	53	48
11	9	35	5	10	0	50	51
12	8	29	5	10	0	44	57
13	11	41	5	12	0	58	43
14	10	39	5	12	0	56	45
15	11	42	3	12	0	57	44
16	11	39	3	12	0	54	47
17	11	39	3	12	0	54	47
18	11	39	3	12	0	54	47
19	12	41	3	12	0	56	45
20	13	44	3	12	0	59	42
21	12	38	3	12	0	53	48
22	13	39	3	12	0	54	47
23	12	36	3	14	0	53	48
24	11	34	3	14	0	51	50
25	10	31	3	14	0	48	53
26	9	29	3	14	0	46	55
27	11	34	5	14	0	53	48
28	11	34	6	14	0	54	47
29	10	29	4	14	0	47	54
30	10	29	4	14	0	47	54
31	9	27	4	14	0	45	56
Totals	310	1105	156	373	0	1634	1497
Ave/Night	10	36	5	12	0	53	48

CITY OF PORTLAND  
 Health & Human Services Department  
 Social Services Division

Family Shelter

JANUARY 2009  
 Intake Statistics

Total Number of Individuals



Intake statistic or new arrival is defined as an individual that has not stayed at the Shelter for a period of three (3) months/90-days or longer.

CITY OF PORTLAND  
Health & Human Services Department  
Social Services Division  
Family Shelter  
INDIVIDUALS

JANUARY 2009

MAINE TOWNS

Casco 3  
S. Portland 8  
Westbrook 8

Maine Towns 19

OUT-OF-STATE

Georgia 4  
Nova Scotia, Canada 2

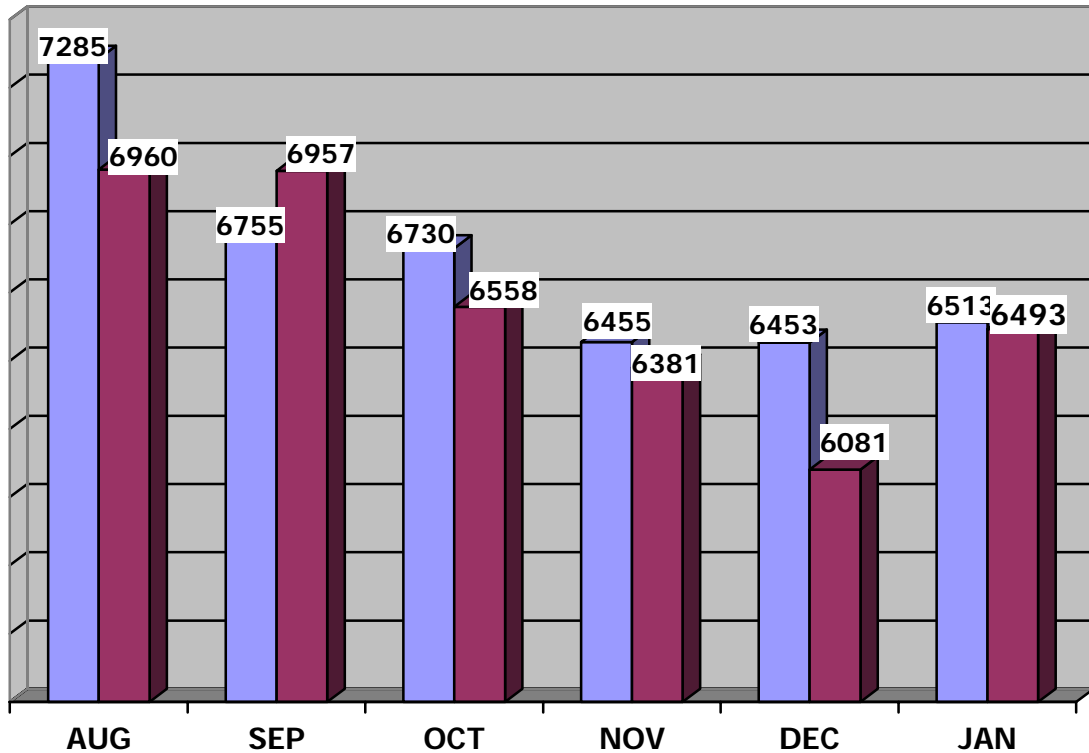
Out-of-State 6

Portland 30

TOTAL INTAKES 55

JANUARY 2009  
ADULT SHELTER  
STATISTICS

2007/08 2008/09



	Aug	Sep	Oct	Nov	Dec	Jan
2007/08	7285	6755	6730	6455	6453	6513
2008/09	6960	6957	6558	6381	6081	6493
Percent	-4%	3%	-3%	-1%	-6%	< -1%

MILESTONE FOUNDATION  
Substance Abuse Shelter 41 Beds

HEALTH & HUMAN SERVICES DEPARTMENT  
SOCIAL SERVICES DIVISION  
Oxford Street Shelter for Men 129 Beds

PREBLE STREET  
Women's Shelter 45 Beds

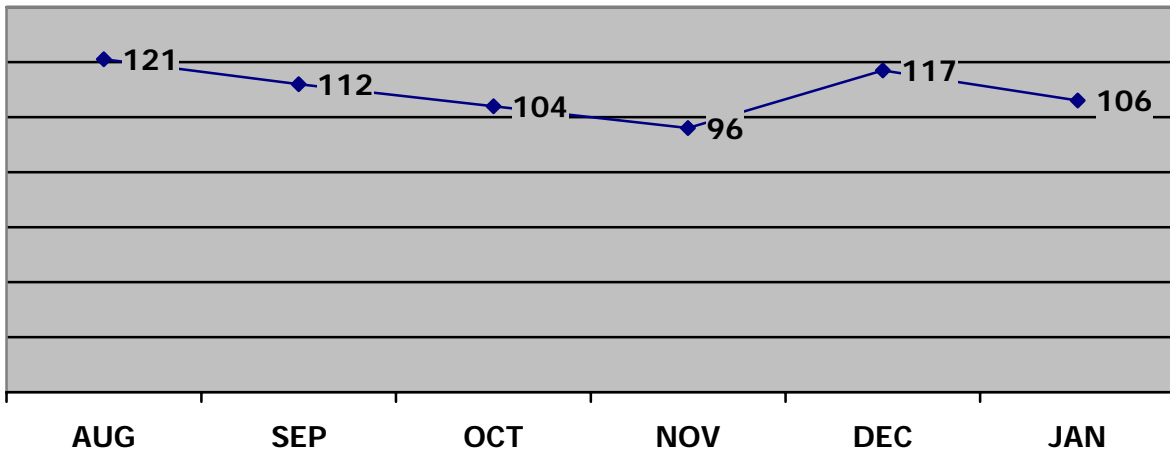
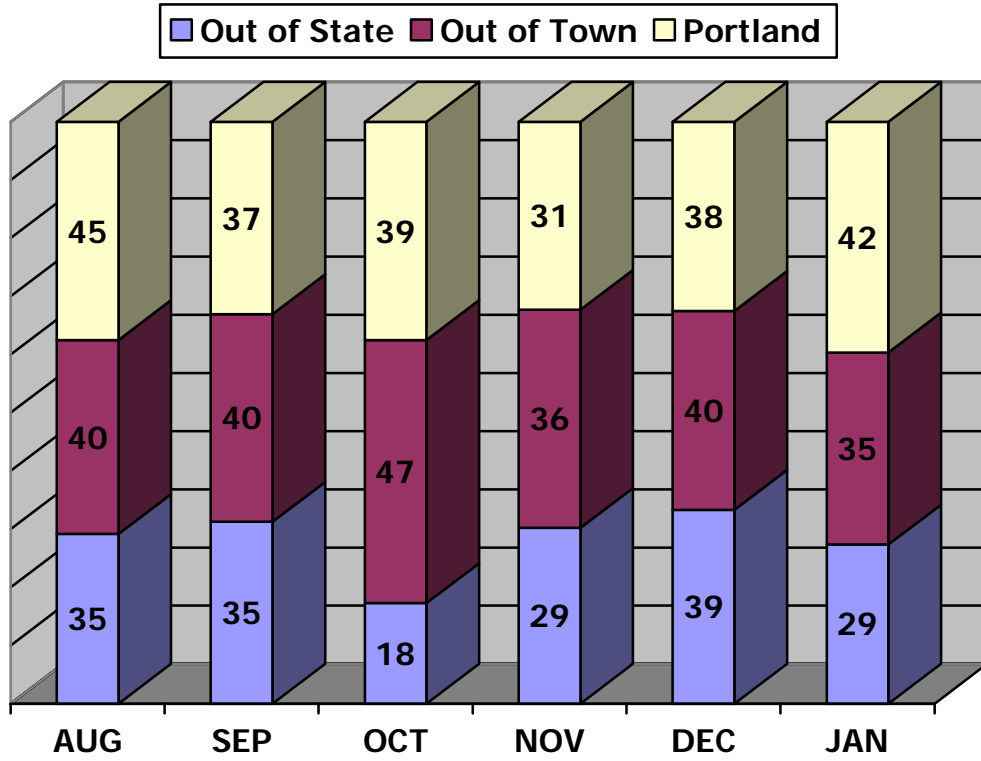
JANUARY 2009  
ADULT SHELTER STATISTICS

Day of Month	Milestone	Oxford St	PS Women's Shelter	Beds Used per Night
	41	129	45	
1	43	109	31	183
2	40	102	33	175
3	38	121	35	194
4	45	115	36	196
5	48	129	40	217
6	43	135	42	220
7	41	125	44	210
8	46	125	44	215
9	42	130	39	211
10	40	121	40	201
11	45	129	39	213
12	44	132	45	221
13	42	139	43	224
14	41	136	43	220
15	40	132	45	217
16	40	131	46	217
17	33	133	43	209
18	36	129	41	206
19	42	127	44	213
20	41	133	44	218
21	34	130	42	206
22	36	133	42	211
23	37	133	40	210
24	33	125	38	196
25	41	138	42	221
26	33	146	48	227
27	39	134	45	218
28	35	127	48	210
29	45	136	43	224
30	47	113	38	198
31	38	120	34	192
TOTAL	1248	3,968	1277	6493
Ave/Night	40	128	41	209

CITY OF PORTLAND  
 Health & Human Services Department  
 Social Services Division

Oxford Street Shelter

JANUARY 2009  
 Intake Statistics



Intake statistic or new arrival is defined as an individual that has not stayed at the Shelter for a period of three (3) months/90-days or longer.

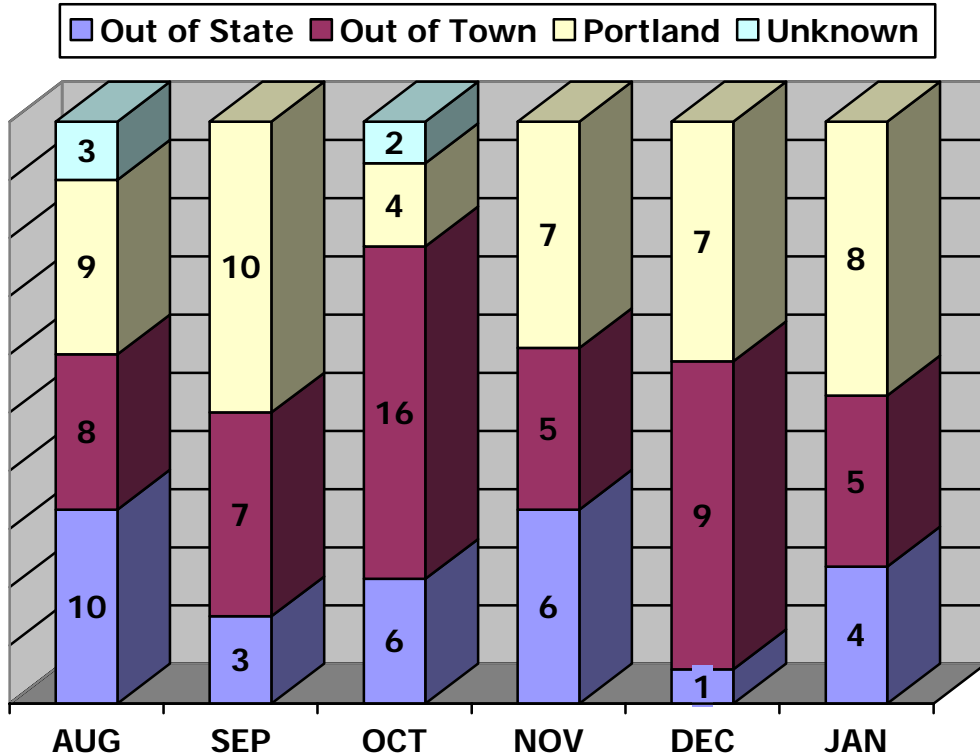


# PREBLE STREET

## Preble Street Women's Shelter

JANUARY 2009

Intake Statistics



### MAINE TOWNS

Eliot	1
Falmouth	1
South Portland	1
Westbrook	2

### OUT-OF-STATE

Florida	1
Massachusetts	1
New Hampshire	2

### PORTLAND

Maine Towns	5	Out-of-State	4	Portland	8
-------------	---	--------------	---	----------	---

- Total Number of Women Served = 88
- Total Number of New Intakes = 17
- Total Number of Women Placed in Housing = 11
- Total Number of Women that Returned = 0